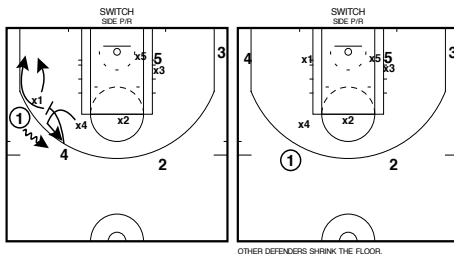


PICK AND ROLL DEFENSIVE SCHEMES –

THERE ARE MULTIPLE SCHEMES AND STRATEGIES USED TO DEFEND THE MOST PREVALENT ACTION IN TODAY’S GAME. THE SCHEME WE EMPLOY DEPENDS ON THE STARTING SPOT AND THE OFFENSIVE PERSONNEL. HERE ARE JUST SIX.

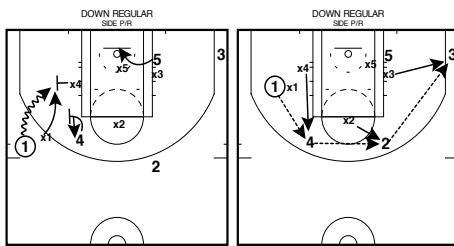
SWITCH



OTHER DEFENDERS SHRINK THE FLOOR.

AS THE BALL HANDLER ENTERS THE ACTION, THE SCREENER’S DEFENDER AND THE BALL HANDLER’S DEFENDER SWITCH DEFENSIVE ASSIGNMENTS. WHEN YOU SWITCH, **TALK IT, TOUCH IT, DENY IT.**

DOWN-REGULAR

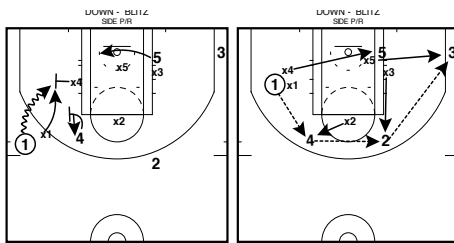


1 IS DOWNED INTO A RECOVER SITUATION.

X4 SPRINTS TO RECOVER. X2 MUST STUNT AT 4 ON POP OR SHORT ROLL.

GET ON THE HIGH HIP OF THE BALL HANDLER AND FORCE THE BALL TO THE BASELINE. FORCE THE BALL AWAY FROM THE SCREEN. X2 MUST STUNT AT 4 ON POP OR SHORT ROLL. GET BACK TO OWN MEN...NO ROTATION.

DOWN -BLITZ

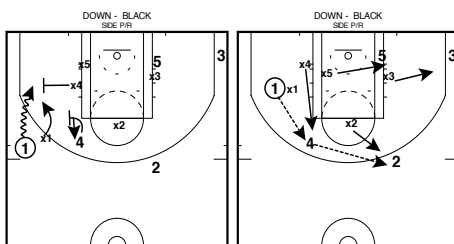


1 IS DOWNED INTO THE BLITZ...INTO...

ON A PASS OUT, THE DEFENSE IS IN A FULL ROTATION.

GET ON THE HIGH HIP OF THE BALL HANDLER AND FORCE THE BALL TO THE BASELINE INTO A TRAP. PRE-ROTATING THE WEAKSIDE DEFENDER TO THE BLOCK.

DOWN-BLACK

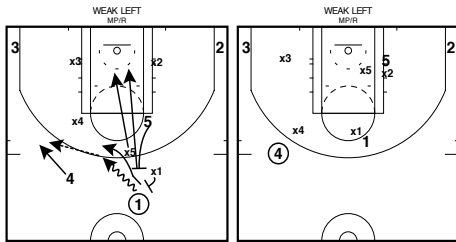


1 IS DOWNED AND 5 PRE-ROTATES TO THE STRONG SIDE BLOCK (STACKING THE BOX)

X1 GETS BACK AND X4 RECOVERS. X2 MUST STUNT AT 4 ON POP OR SHORT ROLL.

GET ON THE HIGH HIP OF THE BALL HANDLER AND FORCE THE BALL TO THE BASELINE AND PRE-ROTATE THE WEAKSIDE DEFENDER TO THE BLOCK. X2 MUST STUNT AT 4 ON POP OR SHORT ROLL. GET BACK TO OWN MEN...NO ROTATION.

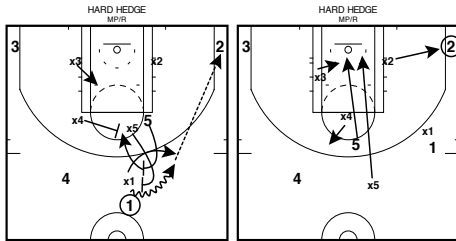
WEAK LEFT - MP/R



X1 IS IN A STAGGERED STANCE, FORCING 1 TO THE LEFT HAND. X5 IS AT THE 3PT LINE "ZONING" THE ACTION.

BALL HANDLER'S DEFENDER IS IN A STAGGERED STANCE, FORCING THE BALL LEFT. THE SCREENER'S DEFENDER MUST BE AT THE 3PT LINE "ZONING" THE ACTION. THE OTHER DEFENDERS ARE STUNTING THE PLAY. **WHY?** = GREAT WAY TO KEEP FROM ROTATING.

HARD HEDGE - MP/R



X3 SQUARES HIS/HER SHOULDERS TO THE SIDELINE AND GIVES 2 SLIDES. X1 GOES UNDER THE PICK. X4 TAGS THE ROLLER AT THE NAIL. X5 SPRINTS TO RECOVER.

THE SCREENER'S MAN GETS ON TOP OF THE SCREEN (SHOULDER'S FACING THE SIDELINE) AND SLIDES TWICE WITH THE BALL HANDLER. THE BALL DEFENDER SPRINTS UNDER THE SCREEN AND ESTABLISHES POSITION IN FRONT OF THE BALL HANDLER. WEAKSIDE DEFENDER MUST TAG ROLLER.